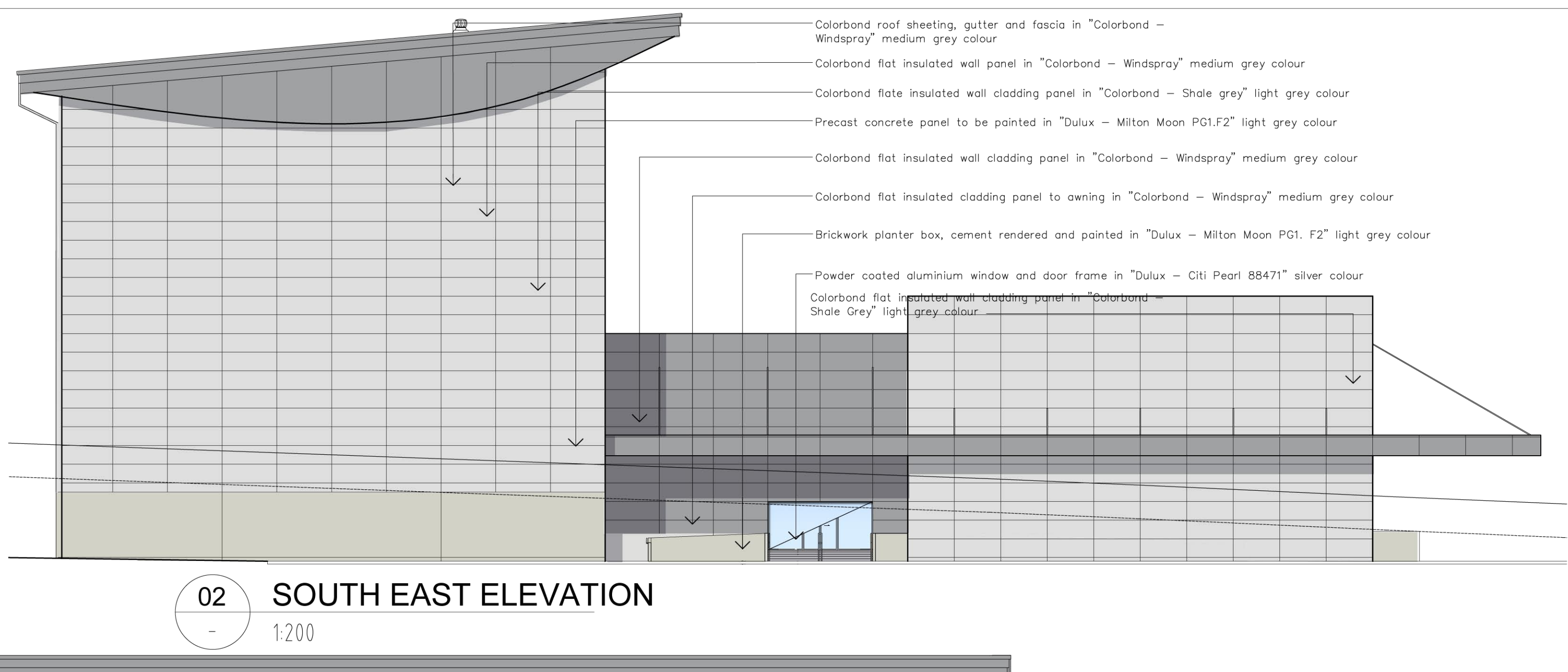


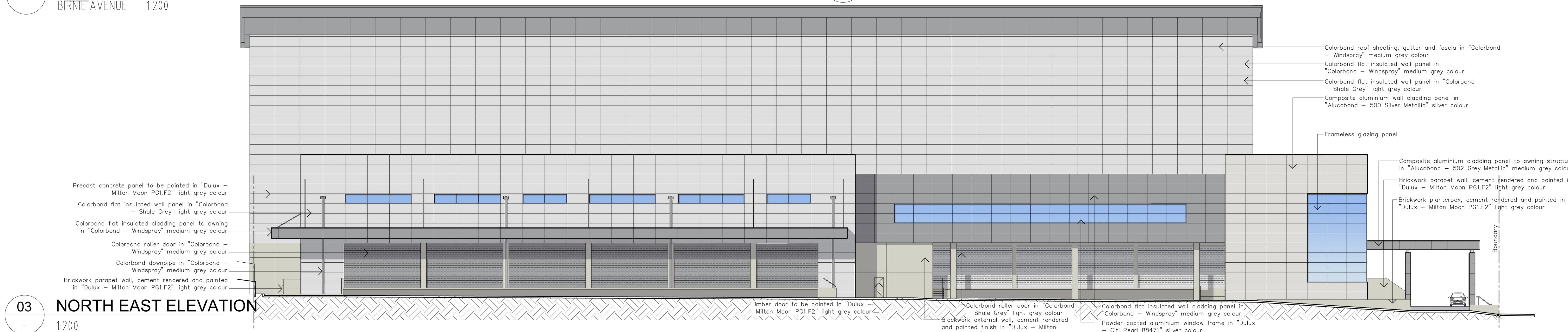
01 NORTH WEST ELEVATION

BIRNIE AVENUE 1:200



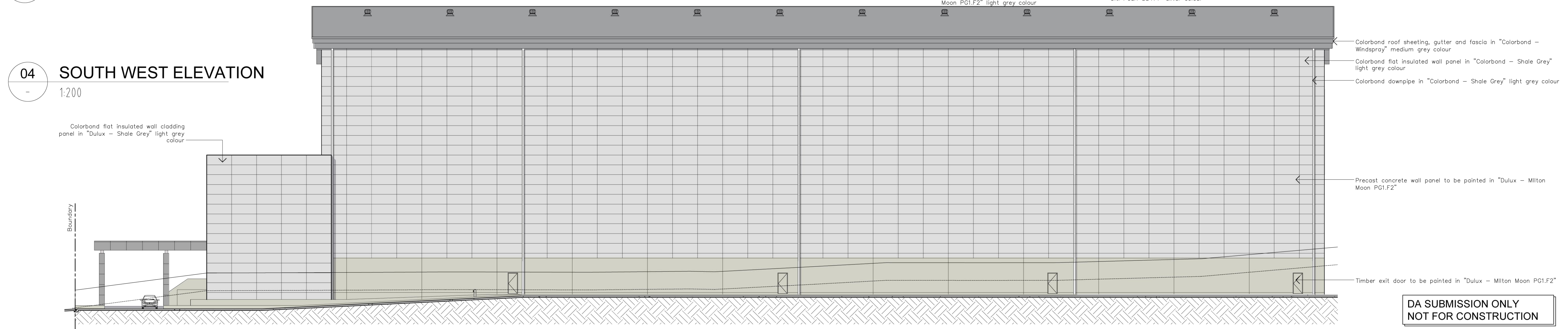
02 SOUTH EAST ELEVATION

1:200



03 NORTH EAST ELEVATION

1:200



04 SOUTH WEST ELEVATION

1:200

NOTES:
This drawing is subject to copyright and may not be copied, used or reproduced in any way without the authority of VT Architects P/L.

DO NOT SCALE DRAWINGS. VERIFY ALL DIMENSIONS ON SITE

Drawing title Abbreviations
SK - Sketch Design, TD - Tender Document.
DA - Development Application, DD - Detail Drawing.
CC - Construction Certificate, WD - Working Drawing.
Copyright VT ARCHITECTS PTY. LTD. 2011

Date	Amendment	Rev.
02.03.11	DA Submission	A
25.05.11	DA resubmission	B

Consultants:
Landscape Architects:
Ray Fuggle & Associates Pty Ltd
Suite 71, 48 George Street, Parramatta NSW 2150
Tel: (02) 9591 9222 Fax: (02) 9591 9544

Stormwater Engineer:
H&H Consulting Engineers Pty Ltd
Level 5, 79 Victoria Avenue
Cherrywood NSW 2007
Tel: (02) 9417 8400 Fax: (02) 9417 8337

Consultants:
Surveyor:
Whelans Insites Pty Ltd
Level 12, 80 Clarence Street
Sydney NSW 2000
Tel: (02) 8234 8300 Fax: (02) 9262 6511

Traffic Engineer:
Halcrow Pacific Pty Ltd
Suite 20, 809 Pacific Highway
Cherrywood NSW 2007
Tel: (02) 9410 4100 Fax: (02) 9410 4199

Client:
Golden Thinking Limited
Unit E2 & E3, 3-29 Birnie Avenue
Lidcombe NSW 2141

Architect:
VT ARCHITECTS PTY LTD
PO Box 8, Regents Park BC,
NSW 2143 AUSTRALIA
26 Bolivia Street,
Cabramatta, NSW 2166
T: (02) 9723 0999
F: (02) 9723 0990
E: info@vtarchitects.com.au
A.B.N. 24 083 968 183
Nom. Architect: Vinh Trang 6275
Website: www.vtarchitects.com.au

Project:
**PROPOSED CONSTRUCTION OF AN
AUTOMATED WAREHOUSE WITH ANCILLARY
OFFICE AND CAR PARKING AREA AND
ASSOCIATED FIT-OUT WORKS FOR USE AS A
LOGISTICS WAREHOUSE AND DISTRIBUTION
FACILITY**
Lot 102 DP 1155104
No. 14 Parramatta Road
Lidcombe NSW 2141

Drawing Title: FINISHES SCHEDULE		
Date: 13.12.10	Drawn by: QC	Scale: 1:200@A1 1:400@A3
Drawing No.: 735-DA-051		Rev. B